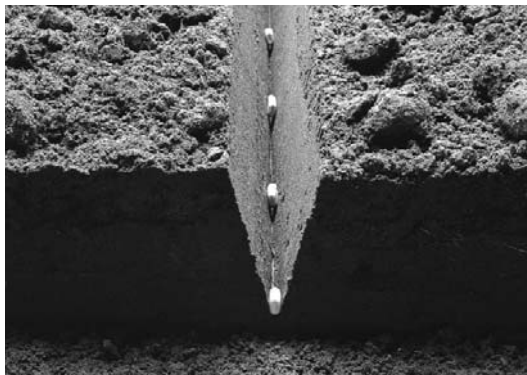
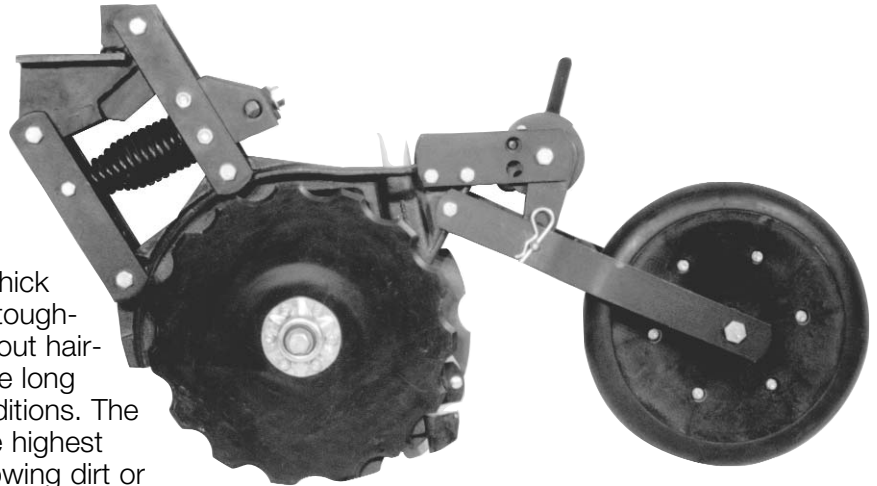


# No-Till Now with the Acra Drill Unit

**Convert your existing grain drill or row unit to a narrow profile state-of-the-art No-Till seeding unit. Or build your own air seeder using proven Acra-Plant No-Till technology:**

- Heavy Duty Construction with Industry-First High Strength Ductile Iron Center Body to take the abuse seen in No-Till planting/seeding. All main pivots are bushed to provide long life.
- Alternating 11- and 15-notch 4mm thick discs aggressively slice through the toughest residue and hardest ground without hair-pinning. Gothic arch bearings provide long life regardless of your operating conditions. The ADU was designed to operate at the highest ground speeds possible without throwing dirt or dragging trash.



- V-slice technology produces perfect seed-to-soil contact in the most difficult planting conditions. "Plant the Stand" to save on seed, knowing that your germination rate will increase dramatically.
- ADU mounts are available for virtually any grain drill, row unit or air seeder frame. Wide variety of press wheels to match your crop rotation and ground conditions.

## Acra-Drill Unit Standard Mount

Kit #	Description	Weight
AP-ADU3X3VG	ADU for 3" x 3" bar with 4" v-groove press wheel	98.00
AP-ADU3X3P	ADU for 3" x 3" bar with 2" peaked press wheel	98.00
AP-ADUEX3X3VG	ADU extended mount 3" x 3" with 4" v-groove press wheel	102.00
AP-ADUEX3XBP	ADU extended mount 3" x 3" bar with 2" peaked press wheel	102.00
AP-ADUIH500VG	ADU IHC 500 with 4" v-groove press wheel	96.00
AP-ADUIH500P	ADU IHC 500 with 2" peaked press wheel	96.00
AP-ADU4X4VG	ADU 4" x 4" bar with 4" v-groove press wheel	112.00
AP-ADU4X4P	ADU 4" x 4" bar 2" peaked press wheel	112.00
AP-ADU4SLVG	ADU 4" x 4" swivel with 4" v-groove press wheel	119.00
AP-ADU4SLP	ADU 4" x 4" swivel with 2" peaked press wheel	119.00

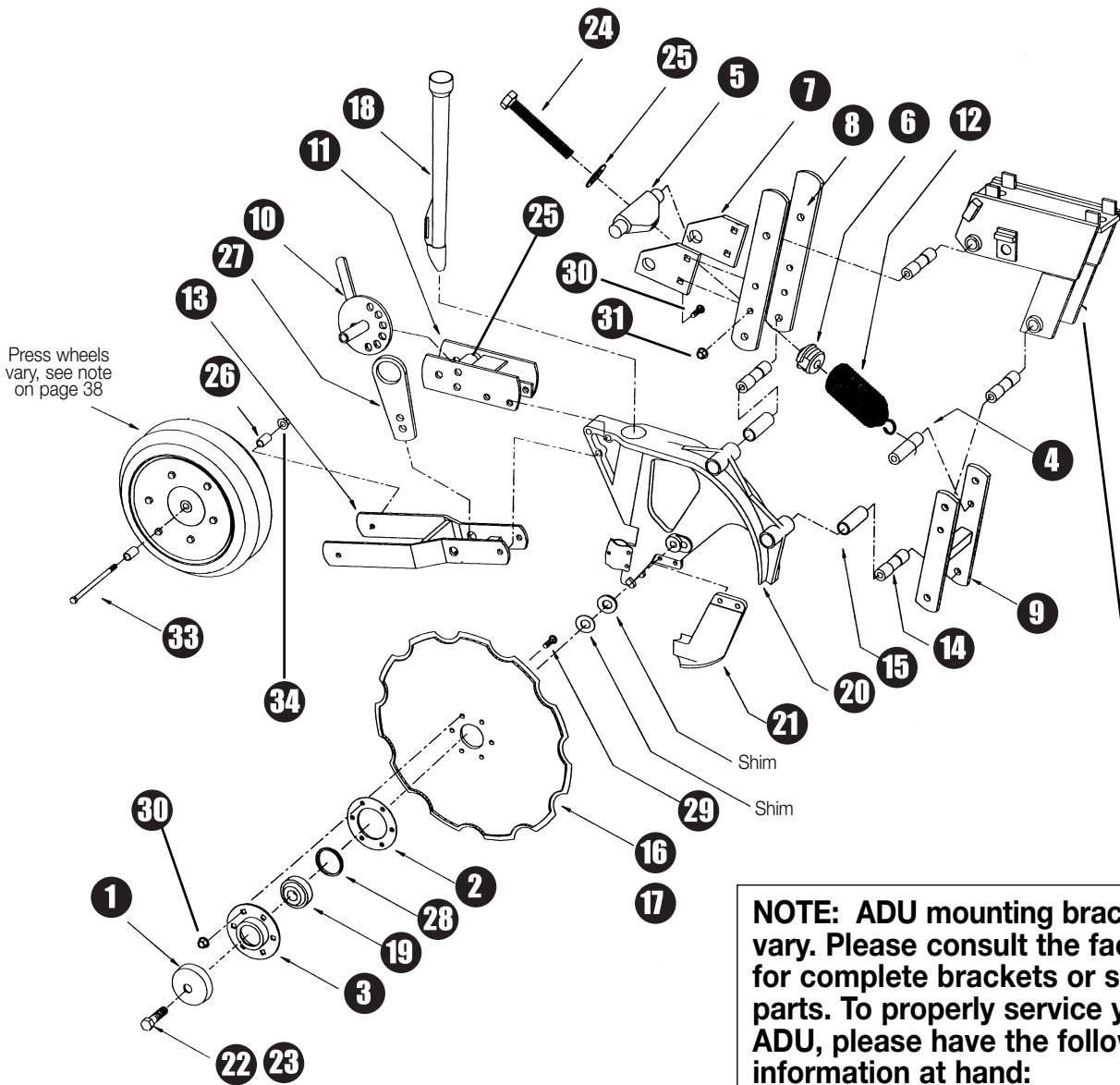
*Note: Other mountings available, consult the factory for details*

**Please specify part number when ordering**

# Acra-Drill Unit

## Acra-Drill Unit

(Parts listed on facing page)



**NOTE:** ADU mounting brackets vary. Please consult the factory for complete brackets or service parts. To properly service your ADU, please have the following information at hand:

1. The Make and Model of Drill or Planter
2. Tool Bar Size (4" X 4", 5" x 7", etc.) that the ADU clamps onto
3. Operating height from bar to ground

## Acra-Drill Unit (Illustration on facing page)

Part #	Qty Req	Description
AP-299041	2	Dust cover ❶
AP-299050	2	Bearing, flange gasket ❷
AP-299143	2	Bearing, flange inner ❸
AP-300011	1	Bushing, large spring mount ❹
AP-300039	1	Spring anchor bar ❺
AP-300055	1	Spring nut 1.8 ID. painted ❻
AP-300056	2	Plate, spring anchor ❼
AP-300112	2	Bar, upper link arm (standard) ❽
AP-300121	1	Weld, lower link arm ❾
AP-300122L	1	Weld, ADU press wheel adjuster ❿
AP-300123	1	Weld, ADU heel bracket '97 ⓫
AP-300196	1	Spring ⓬
AP-300413	1	Weld, double axle arm ⓭
AP-300527	4	Hinge bushing ⓮
AP-300537	4	Bushing 1" OD. x 3/4" ID ⓯
AP-301111	1	ADU disc 11-notch (right hand, shown) ⓰
AP-301115	1	ADU disc 15-notch (left hand, not shown) ⓱
AP-301112	1	Seed tube with protector ⓲
AP-301155	2	Bearing, 5/8" bore ⓳
AP-302132	1	ADU center body with clips ⓴
AP-331100	1	Insert JDI3 with bolts and nuts ⓵
AP-500506	1	5/8" x 2-1/2" LH HHCS (left hand, not shown) ⓶
AP-500510	1	5/8" x 2-1/2" RH HHCS (right hand, shown) ⓷
AP-500512	1	5/8" x 4-1/2" all thread HHCS ⓸
AP-500621	1	5/8" diameter SAE washer ⓹
AP-501540	2	Spacer ⓺
AP-505031	1	Bar, height adjuster ⓻
AP-500506	1	HHCS left-hand 5/8" x 2.5" (not shown)
AP-500451	1	Bolt carriage, 1/4" x 0.75" (not shown)
LN1	1	Nut, nylon lock, .0250 1/4" (not shown)
AP-698051	2	Spacer ring ⓼
AP-500448	12	Cap screw, button head 5/16" x 3/4" ⓽
AP-500484	1	Bolt, HHCS 7/16" x 5-1/2"
AP-500582	12	Nut, top lock, 5/16" NC ⓿
AP-500584	5	Nut, top lock 1/2"
AP-500499	4	1/2" x 5-1/2" NC HHCS (not shown)
AP-510679	4	Bolt, carriage 7/16" x 1.25" ⓿
AP-500583	8	Nut, top lock 7/16" NC ⓿
AP-500481	3	Bolt HHCS 7/16" x 3.5" G5 zinc (not shown)
AP-501559	1	Adjuster pin spacer tube (not shown)
AP-510764	2	Pull pin (not shown)
AP-510765	2	Cam Adjuster spring .6" x 2.5" (not shown)
AP-510766	2	Cam Adjuster split ring (not shown)
AP-500495	1	Bolt, HHCS 1/2" x 3.5" G5 zinc (not shown)
AP-500552	1	Adjuster pull pin with hairpin clip (not shown)
AP-510716	1	5/8" x 6-1/2" NC HHCS ⓿
LN5	1	Nut, nylon lock 5/8" ⓿
Shim	14	Shim 1" x 5/8" x 1/16" (not shown)

**Consult factory for optional heavy duty down pressure double spring assembly**

**For replacement disc assemblies order  
AP-301151 (15" x 11 notch) Retail \$65.67  
and  
AP-301152 (15" x 15 notch) Retail \$65.67**