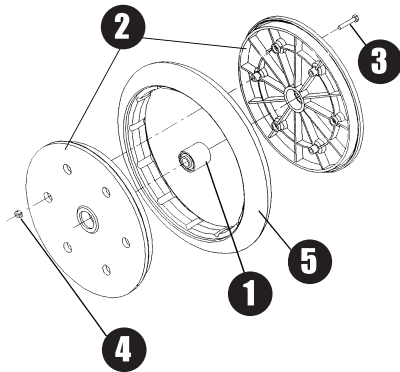


Acra-Drill Unit Replacement Parts

Note: Acra-Drill Units are supplied with a wide variety of press wheel options that are customized to suit the individual No-Till plan and crop rotation. We cannot possibly list all of the options that have been used over the years. When ordering replacement parts, please have the following information at hand:

1. Measurement of wheel diameter, width, and rib style.
2. Bearing style — water pump or 40mm.
3. Metal or Plastic Wheel.

With this information, the factory will be able to service your Acra-Drill Unit properly.



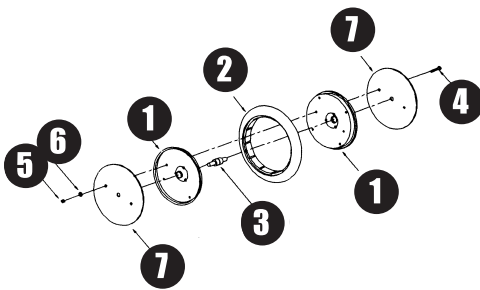
AP-510712 – 2 x 13 Press Wheel AP-510723 – 4 x 12 Press Wheel AP-510827 – 3 x 13 Press Wheel

Part #	Qty Req	Description
AP-505618	1	Bearing, 40mm ①
AP-Varies	2	Nylon wheel, half, varies with model ②
AP-Varies	6	1/4"NC flange bolt, length varies with model ③
AP-500580	6	1/4"NC top lock nut ④
AP-Varies	1	Press wheel, varies with model ⑤

Note: Other press wheels available, consult with factory

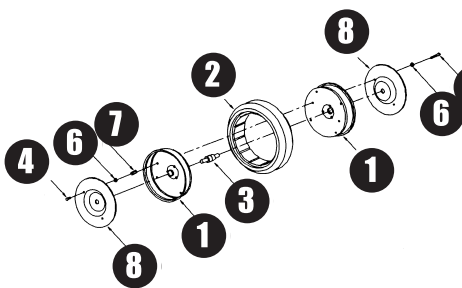
AP-300421 – 2 x 13 Press Wheel (Prior to 1997)

Part #	Qty Req	Description
AP-321303	1	2" x 13" metal press wheel assembly without arm or covers
AP-321310	2	2" x 13" wheel half ①
AP-321312	1	2" x 13" peaked tire ②
AP-341215	1	Double axle bearing ③
AP-500403	1	5/16" x 2-1/4" carriage bolt ④
AP-500461	1	3/8" x 3/4"NC HHCS
N2	1	3/8"NC full finish hex nut
N7	1	5/16"NC full finish hex nut ⑤
AP-500623	1	5/16" diameter lock washer ⑥
AP-500624	1	3/8" diameter lock washer
AP-501308	2	2" x 13" plate cover ⑦



AP-300423 – 4 x 12 Press Wheel (Prior to 1997)

Part #	Qty Req	Description
AP-321202	1	4" x 12" press wheel assembly without arm or covers
AP-321210	2	4" x 12" wheel half (2 required) ①
AP-321212	1	Depressed center 4" x 12" tire ②
AP-341215	1	Double axle with bearing assembly ③
AP-500454	1	5/16" x 3/4"NC HHCS ④
AP-500458	1	5/16" x 2-1/2"NC HHCS ⑤
N7	1	5/16"NC full finish hex nut
AP-500623	2	5/16" diameter lock washer ⑥
AP-500772	1	5/16"-18NC internal thread sleeve ⑦
AP-501307	1	4" x 12" plate cover ⑧



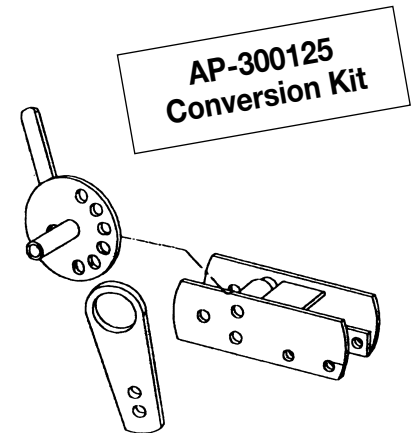
AP-300125 – Depth Adjustment Conversion Kit for ADUs Manufactured Before 1997

Part #	Qty Req	Description	Weight
AP-300125		Depth adjustment conversion kit for ADUs manufactured before 1997	8.8

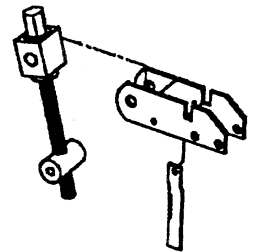
Kit consists of:

AP-300123	1	Heel bracket weldment (aux spring requires AP-300124*)	
AP-500481	2	Bolt, HHCS 7/16" x 3-1/2"	
AP-500583	2	7/16" top lock nut	
AP-510765	2	Adjuster spring .6 x 2.5"	
AP-510766	2	Adjuster split ring	
AP-505031	1	Bar, height adjuster	
AP-300122L	1	Weld, ADU press wheel adjuster	
AP-500495	1	Bolt, HHCS 1/2" x 3.5" G5 zinc	
AP-500584	1	Nut, top lock, 1/2"	
AP-501559	1	Adjuster pin spacer tube	
AP-500552	1	Adjuster pull pin with hairpin clip	

*Specify if auxiliary springs are used.



AP-300125 replaces these parts

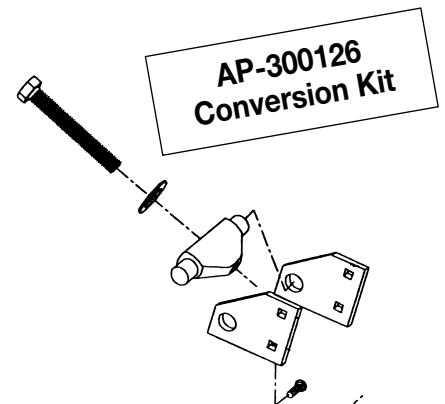


AP-300126 – Spring Conversion Kit for ADUs with 2 Down Pressure Springs

Part #	Qty Req	Description	Weight
AP-300126		Spring conversion kit for ADUs with 2 down pressure springs	7.9

Kit consists of:

AP-300196	1	Spring	
AP-300011	1	Bushing, large spring mount	
AP-300039	1	Spring anchor bar	
AP-300055	1	Spring nut 1.8 ID. painted	
AP-300056	2	Plate, spring anchor	
AP-500512	1	5/8" x 4-1/2" all thread HHCS	
AP-500621	1	5/8" diameter SAE washer	
AP-510679	4	Bolt, carriage 7/16" x 1.25"	
AP-500484	1	Bolt, HHCS 7/16" x 5-1/2"	
AP-500583	5	Nut, top lock 7/16" NC	



AP-300126 replaces these parts

